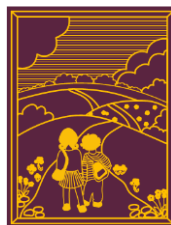


GLEN HILLS PRIMARY SCHOOL



Sports Premium budget spending overview 2023-2024

Initiative	Cost
Sports coaches delivering high quality PE, working with staff for develop PE knowledge and staff CPD for PE curriculum sessions.	£8100
Sports coach working with staff for develop PE clubs/competitions/Sports Leaders/intra sport competitions for pupils throughout the school day.	£12900
Membership into the South Leicestershire School Sport & Physical Activity Model 2020-2021	£2,700
Additional coaches for tournament training	£100
Maintenance of resources and equipment incl. Happy Lunchtime	PSA funding
Release time for coordinators to attend training/meetings/organise tournaments and sports days (less than previous due to sports apprentice involvement – release money not needed for them).	£400
Money to support Enrichment/Disadvantaged pupils/Mental Health through wider curriculum offer	£200
Total costs (£20, 400 sports premium funding)	£24, 400

The purpose of the Sports Premium initiative is to ensure that 'all pupils leave primary school physically literate and with the knowledge, skills and motivation necessary to equip them for a healthy lifestyle and lifelong participation in physical activity.'

Glen Hills Primary School wholeheartedly supports this vision. The funding allocation, as outlined below, is designed to ensure a self-sustaining improvement in the quality of PE and sport across the whole school.

Initiative	Time Frame	Cost	Desired Impact	Monitored By
Class teacher and Classroom Support CPD: <ul style="list-style-type: none"> Working closely with Sports coaches provide 'on-the-job' CPD for staff in key year groups Staff selected the area in which they specifically required training Developing on the strong relationships between Glen Hills and external coaches. 	2023-24	£8100	<p>A self-sustaining improvement in quality first teaching of PE.</p> <p>Increased confidence and knowledge of staff in the teaching of PE and Sport.</p> <p>Staff keep their knowledge and skills as teachers up-to-date and be self-critical and take responsibility for improving teaching through appropriate professional development, responding to advice and feedback from colleagues.</p>	RW, DB, BS, staff, CAs, Governors

<ul style="list-style-type: none"> Basketball highlighted as an area for development. 			<p>Raised profile of School Sport. Improved outcomes for children in relation to physical literacy – motivation, confidence, physical competence, knowledge and understanding. Providing children with a ‘movement foundation.</p> <p>Increased confidence, knowledge and skills of all staff in teaching PE.</p>	
<p>Sports coach working with staff for PE sessions and supporting staff with leading sports clubs for pupils throughout the school day.</p>	2023-24	£12, 900	<p>Increased school clubs available to children in and after the school day with coach to support CPD Wider variety of clubs on offer to children Increased outcomes for pupils including mental health – work with Sports Ambassadors, Mental health Ambassadors and Happy lunchtime staff.</p>	DB, RW, AS, BS, FV, RC, EC, LH Governors
<p>Membership into the South Leicestershire School Sport & Physical Activity Model 2022-2023</p>	2023-24	£2,700	<p>Full access to a comprehensive range of inter-school competitions (including inclusion events). To engage the least active and increase sports participation for all.</p> <p>Health and Wellbeing package includes initiatives such as:</p> <ul style="list-style-type: none"> Big moves – TAs to be trained (sustainability) Alternative active clubs Inclusive clubs. Energise Club (for the least active, TA to be trained). LADS and GALS clubs for less active boys and girls. <p>- Increased confidence, knowledge and skills in teaching PE with CPD</p> <p>-</p> <p>- Sustainability – cascade information from training courses.</p>	RW, DB, BS Governors
<p>Sports Ambassadors</p> <ul style="list-style-type: none"> Sport clubs, inter-school competitions, leading projects (e.g. house tournaments) etc. Inclusive Sport provision 	Academic year	£ from release money below	<p>Further strengthen the active activities available during breaks, lunchtimes and after school.</p> <p>Pupils to take an active role in our “House Championships this year.</p> <p>Further increased participation in inter-school competitions.</p> <p>Raising the profile of active and healthy lifestyles.</p> <p>Engaging the least active in sport.</p> <p>Enhanced pupil outcomes.</p> <p>Increased participation in competitive sport and profile raised by training pupils to lead as ambassadors.</p>	RW, AS, BS, FV, EC, LH, DB, Governors

<p>Additional coaches for tournament training</p> <ul style="list-style-type: none"> • Trained and specialised sports coaches to deliver specific sports training (eg rugby, basketball) when tournaments are approaching • Links to inter-school competition. 	2023-24	£100	<p>Engage all children in regular activities</p> <p>Broader range of sports available</p> <p>Raising the profile of school sport</p> <p>To give CPD to teachers observing these coaches.</p>	RW, DB, BS Governors
<p>Maintenance</p> <ul style="list-style-type: none"> • Ensuring that all sports taught within the curriculum are fully resourced (linking to the new schemes of work) • Supporting the school environment. 	2023-24	£PSA	<p>Improved outcomes for pupils.</p> <p>Raising the profile of sport at Glen Hills.</p> <p>A broader experience of a range of sporting activities.</p>	RW, DB, NS, BS, Governors
<p>Release time for coordinators to attend training/meetings/update planning linked to Routes To Resilience/positive mental health and to organise tournaments and sports days.</p>	Academic year	£400	<p>Engage all children in regular activities</p> <p>Raising the profile of school sport</p> <p>The profile of mental health is improved in schools – links to R2R (backed by NHS) resilience and self-esteem etc teaching proactive approach to wellbeing.</p> <p>CPD and courses for staff / PE leader to attend all PE meetings and conference</p> <p>Increased confidence, knowledge and skills of all staff in teaching PE.</p> <p>PE Lead to have time to co-ordinate inter-house competitions.</p>	RW, DB, BS, FV, DB, Governors

Swimming Coaches and first aid training	Autumn Term to Easter	£ PSA Support	Paying towards swimming (instructors, pool and bus) to subsidise parents.	RW, DB, NS, BS, AS Governors
National school sports week	June 2024	£PSA	<p>Pupils in the entire school to experience a range of new sports and have the opportunity to compete against other schools during this week.</p> <p>Local coaches in to provide an abundance of planned activities.</p> <p>Local schools invited to compete against our school in after school games like rounders, t-ball, multi-skills etc.</p> <p>Assemblies taken by local clubs to encourage our pupils to join out of school clubs.</p> <p>Sports Apprentice to lead many events</p>	RW, DB, BS Governors
Enrichment clubs	2023-24	£200	<p>New wider curriculum clubs offered in all year groups across all ages</p> <p>They will encourage more sports clubs and clubs linked to mental health, the wider curriculum, keeping healthy and overcoming barriers for pupils in school</p>	RW, DB, NS, EC, FV, RC, AS, BS Governors