



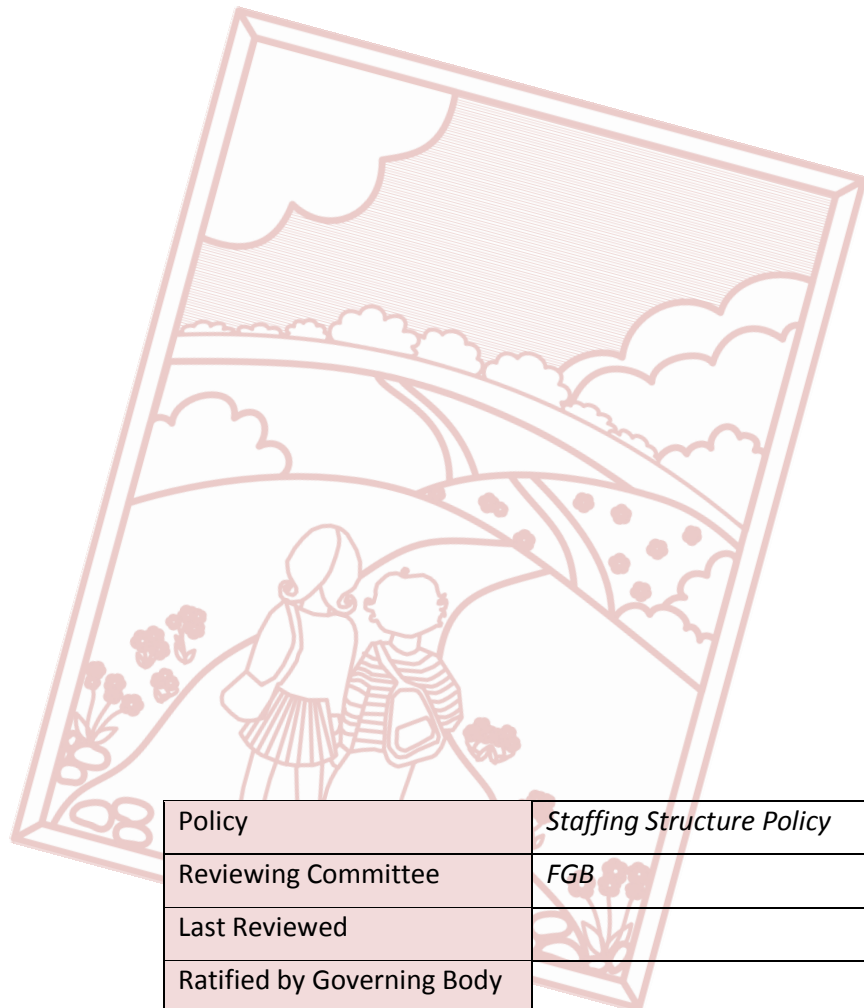
Glen Hills Primary School Staffing Structure Policy

Glen Hills Staffing Structure 2015

The teaching staffing structure and pay guidelines for Glen Hills Primary School are listed below together with individuals current scales (actual salary not listed due to data protection compliance);

<ul style="list-style-type: none"> Executive Headteacher (Leadership Spine) - Assessment / More and Very Abled Leader
<ul style="list-style-type: none"> Head of School (Leadership Spine) – English Leader /KS1 Leader
<ul style="list-style-type: none"> Assistant Head (Leadership Spine) - Maths Leader / KS2 Leader
<ul style="list-style-type: none"> Assistant Head (Leadership Spine) – Science Leader / School Direct Leader
<ul style="list-style-type: none"> PE Leader (TLR 2a)
<ul style="list-style-type: none"> ICT Leader (TLR 2a)
<ul style="list-style-type: none"> SENCo (TLR 2a)
<ul style="list-style-type: none"> Foundation Stage Leader (TLR 2a)
<ul style="list-style-type: none"> Inclusion management leader / International links (TLR 2b)
<ul style="list-style-type: none"> Music and Cultural Leader (TLR 2a)
<ul style="list-style-type: none"> Art Leader (Main Scale)
<ul style="list-style-type: none"> DT Leader (Main Scale)
<ul style="list-style-type: none"> History Leader (Main Scale)
<ul style="list-style-type: none"> Geography Leader (Main Scale)

<ul style="list-style-type: none">• Environmental Leader (Main Scale)
<ul style="list-style-type: none">• Local Community Leader (Main Scale)
<ul style="list-style-type: none">• Library Leader (Main Scale)
<ul style="list-style-type: none">• RE Leader (Main Scale)



Policy	<i>Staffing Structure Policy</i>
Reviewing Committee	<i>FGB</i>
Last Reviewed	
Ratified by Governing Body	